

# Inverto IDL7000-T firmware transfer/update via serial port

---

## Notes

- Installing an older version of firmware over the top of a newer version of firmware may cause the library contents to be deleted; *this is especially the case if reverting to version 1.03 or earlier*
- Except when stated, do not power off the PVR during the firmware transfer/update process
- These instructions relate to using **TeraTerm Pro** with **Windows**; the procedure may be used, subject to minor adaptations, with other terminal emulators and on other operating systems

## Installing TeraTerm Pro

HyperTerminal, which previous firmware update instructions were based upon, is no longer part of Windows, and is no longer a free download. These instructions have been written to use **TeraTerm Pro 4.56**, a free open-source terminal emulator for the Microsoft Windows family, available from:

<http://sourceforge.jp/projects/ttssh2/files/>

Download the latest installer (**teraterm\_utf8-4.56.exe** as of 10 January 2008) and install with default components and your preference of desktop shortcuts etc. Older versions may be incompatible with some serial ports and/or the 1K XMODEM transfer protocol this procedure employs.

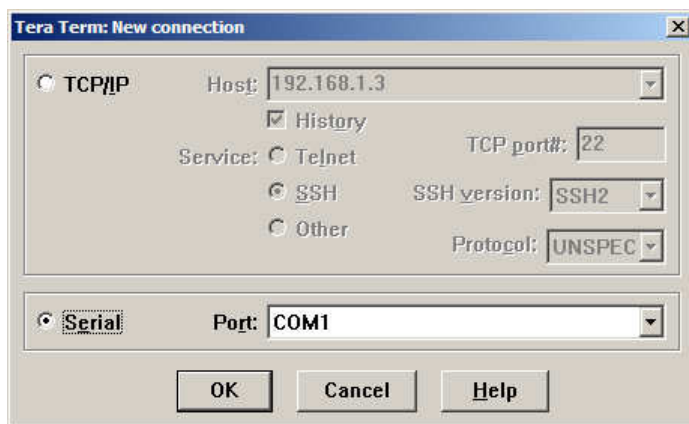
## Connecting the IDL7000-T

The PVR must be connected with a RS232C 9-pin (V.24) male/female serial cable, or with a USB/male serial adapter for computers not fitted with a serial port. If using a USB adapter, software drivers may need to be installed before the added serial port becomes active and usable.



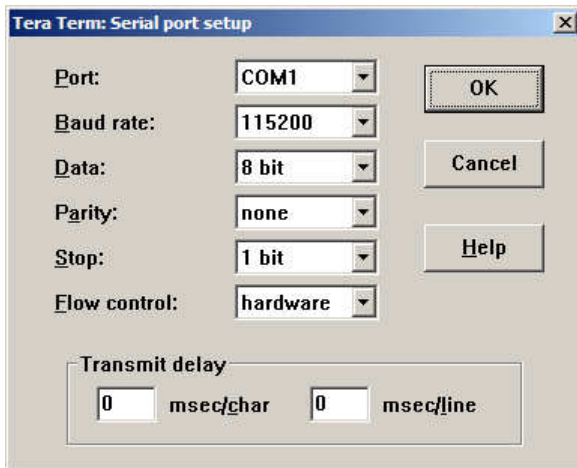
## Using TeraTerm Pro

1. Start **TeraTerm Pro** via **Start** → **Programs** → **UTF-8 TeraTerm Pro with TTSSH2** → **UTF-8 TeraTerm Pro**
2. From the **New connection** dialogue, select **Serial** and the appropriate serial port (e.g. COM1, USB adapters may be numbered higher):



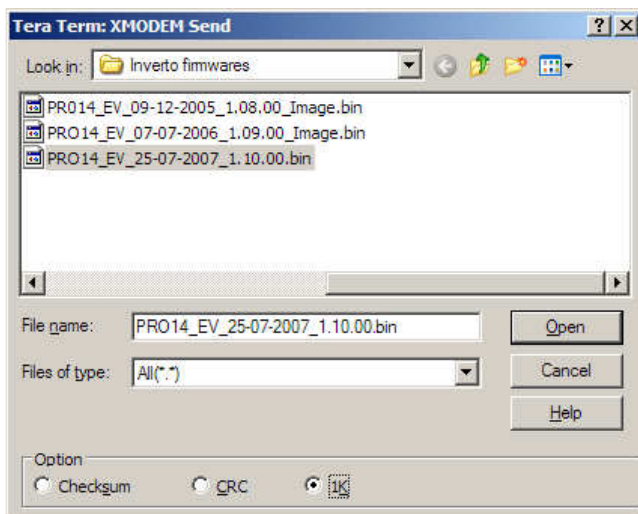
3. Click **OK**
4. Go to **Setup → Serial port...**
5. For the relevant serial **Port** in use, change the properties to:

**Baud rate:** 115200  
**Data:** 8 bit  
**Parity:** none  
**Stop:** 1 bit  
**Flow control:** hardware



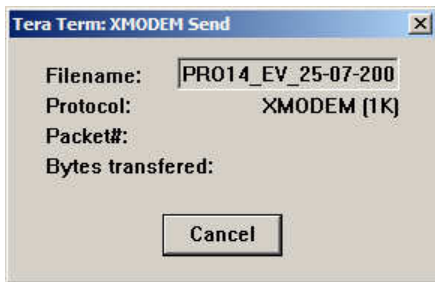
The **Transmit delay** settings may be left at their defaults of 0 msec.

6. Click **OK**
7. If you want to store these settings for future use, go to **Setup → Save setup...**
8. Go to **File → Transfer → XMODEM → Send...**
9. Locate and single click on the required firmware binary file
10. Select **1K** from the options at the foot of the dialogue:

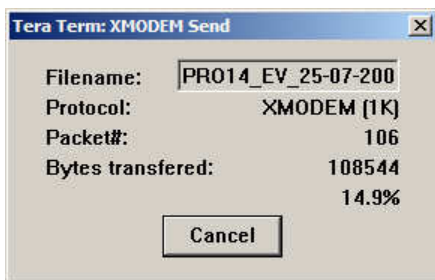


11. Click **Open**

12. When the **XMODEM Send** dialogue is displayed in TeraTerm Pro, power the PVR off and then on again (using the on/off switch at the back of the unit)



13. Data will start transferring to the PVR and **Download in progress** will be displayed on the front panel of the PVR. TeraTerm Pro will display progress:



14. Once the firmware has been transferred the PVR will update the firmware:



**Do not power off the PVR until the firmware is updated!**

15. After the firmware has been updated the PVR will boot up and the following message will be shown in TeraTerm: **Shutting down bootloader and restarting...**

16. TeraTerm Pro can now be closed and the serial cable disconnected from the PVR